

Mequon Nature Preserve - Wetland invertebrates grouped by level of pollution tolerance

1. Circle each type of pond critter you identified (Pictures are not to scale)

Sensitive



Mayfly larva



Fairy shrimp



Caddisfly larva



Dobsonfly larva



Riffle beetle



Water scorpion
(*Nepa*)



Water scorpion
(*Ranatra*)

Semi-sensitive



Caddisfly larva



Damselfly larva



Dragonfly nymph



Water boatman



Backswimmer



Fishfly larva



Marsh treader



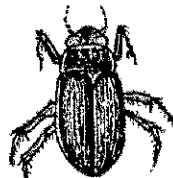
Giant water bug



Beetle larva



Predaceous diving beetle



Water scavenger beetle



Gilled snail



Orb snail



Fingernail clam



Crane fly larva

Semi-tolerant



Water mite



Blackfly larva



Midge larva
(non-red)



Scud



Fishing spider



Crayfish



Water strider

Tolerant



Pouch snail
(left side open)



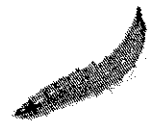
Aquatic sowbug



Leech



Midge larva
(red)



Horse/deerfly larva

2. Tally the types of pond critters you found in each category.

Sensitive	_____ x4 =	_____
Semi-sensitive	_____ x3 =	_____
Semi-tolerant	_____ x2 =	_____
Tolerant	_____ x1 =	_____
Total:	_____ (E)	_____ (F)

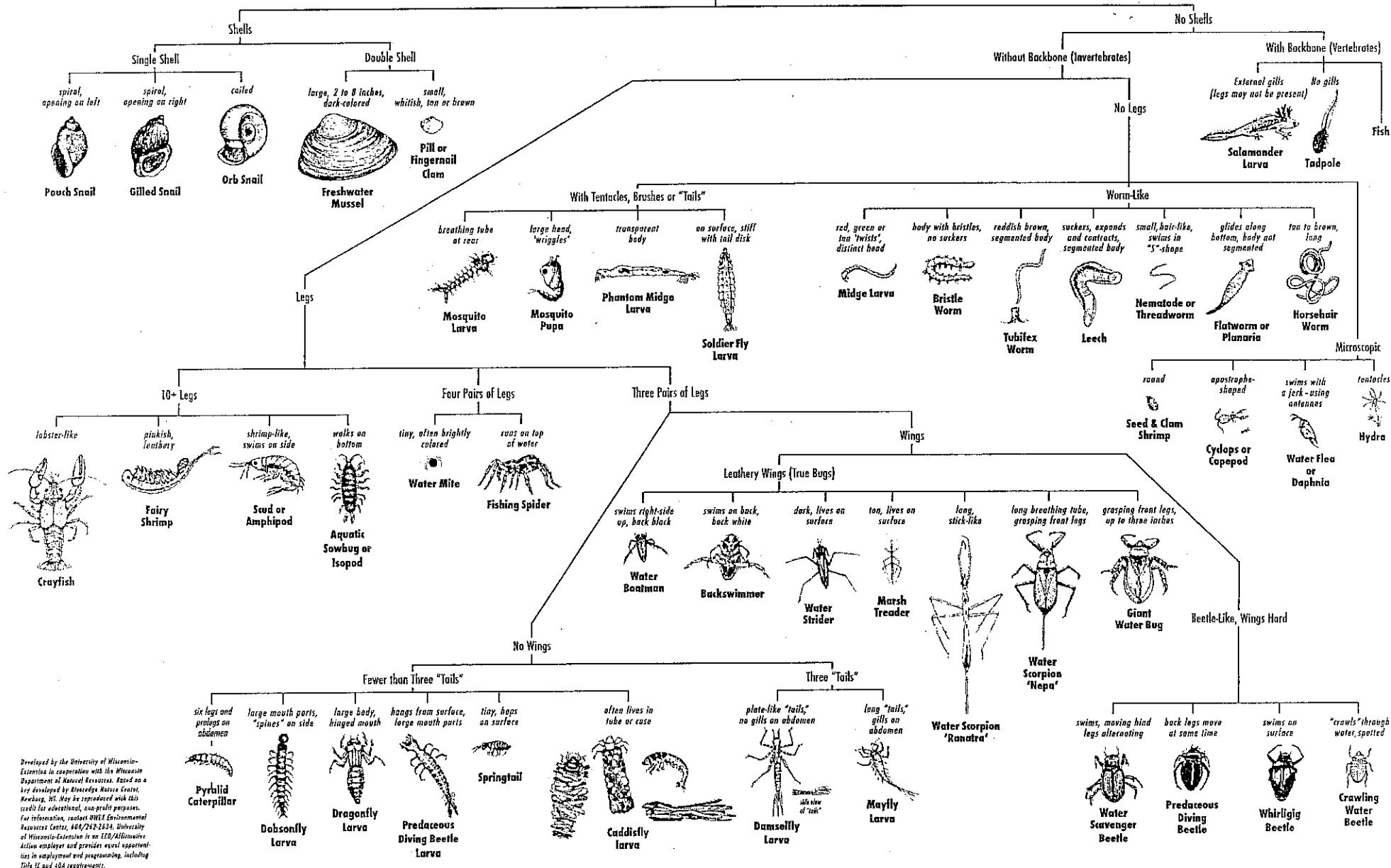
3. Divide F / E = _____
Water quality score

4. How clean is the water here?

3.6 and up	Excellent quality
2.6-3.5	Good quality
2.1-2.5	Fair
2.0-1.0	Poor

Key to Life in the Pond

(Sizes of illustrations are not proportional.)



Developed by the University of Wisconsin-Extension in cooperation with the Wisconsin Department of Natural Resources. Based on a key developed by *Riveredge Nature Center, Neeshewa, WI*. May be reproduced with this credit for educational, non-profit purposes. For information, contact WUE Environmental Resources Center, 408/242-2434, University of Wisconsin-Extension is an EEO/AA/Minorities Action employer and provides equal opportunities in employment and programming, including Title IX and ADA requirements.